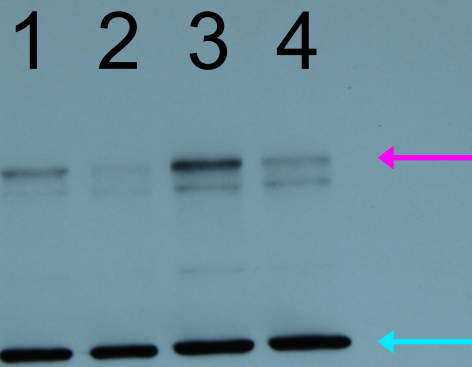


anti-Rtf1 and anti- β -actin combined Western blot



← Cyan arrow indicates β -actin protein.

← Magenta arrow indicates Rtf1 protein.

Lanes:

1: Protein lysate from Non-target shRNA-treated mESCs

2: Protein lysate from Rtf1 shRNA-treated mESCs

3: Protein lysate from Non-target shRNA-treated mESCs

4: Protein lysate from Rtf1 shRNA-treated mESCs